

**PLAN FOR
REPATRIATION OF THE DEAD
OF
WORLD WAR II
AND
ESTABLISHMENT OF PERMANENT
UNITED STATES MILITARY CEMETERIES
AT HOME AND ABROAD**

WAR DEPARTMENT

SUMMARY SHEET

8 September 1945

SUBJECT: Current Plan for Return of American Dead and Establishment of Overseas and United States Cemeteries.

DISCUSSION

1. On 22 June 1943, the Project Planning Division, Office of the Deputy Chief of Staff for Service Commands, ASF, directed the Quartermaster General to prepare a study leading to a determination of a method of disposal of the dead in World War II. This subject has been under constant study since that time and has resulted in the attached plan which includes the entire problem of Graves Registration, the repatriation of the dead and the establishment of additional national cemeteries in both the continental United States and in certain foreign sovereignties.

2. The question of additional national cemeteries within the continental United States has been cleared through the War Department, and enabling legislation is now in the Congress in two bills, H.R. 516 and S. 524. S. 524 provides for the establishment of one national cemetery in each state and "of such additional national cemeteries" as may be needed for the burial of war veterans. The Act has passed the Senate and is awaiting action of the House. The House Military Affairs Committee has amended the Senate bill in order to include former service men without war service among those entitled to burial in national cemeteries. This amendment will legalize War Department practice in this connection. The bill has been further amended by the House Military Affairs Committee to authorize the Secretary of War to employ necessary civilian help without regard to Civil Service or wage and hour law, and further to receive donations from private sources to be used in addition to appropriated Federal funds for the upkeep and maintenance of the cemeteries.

3. As a result of adoption of S. 524 as the basic legislation by the House Military Affairs Committee, H. R. 516 referred to in paragraph 2 above has been shelved.

4. In accordance with directive of the Deputy Chief of Staff, approved July 21, 1944, the Quartermaster General will, upon final passage of the necessary legislation, give special attention to the possibility of using small Army posts acquired prior to July, 1940, in whole or in part, for national cemetery purposes.

5. The Quartermaster General in his capacity as Chief of the Graves Registration Service has taken the necessary steps for the operation of the Service through AGO letter 322 (24 Jan 45) dated 30 January 1945, which implements paragraph 2, Section II, War Department Circular No. 2, 1945.

6. On 11 June 1945, Mr. McCarren introduced S. 1136 to provide for the evacuation and repatriation of the remains of certain persons who died and are buried outside the continental limits of the United States. This bill directly charges the Quartermaster General with direct responsibility for carrying out the repatriation provisions. The War Department has approved the purpose of the bill but requested that it be amended to change the responsibility to the Secretary of War.

7. War Department policies on final disposition of the remains of American World War II overseas dead are as follows:

a. All feasible wishes of the next of kin will be complied with, and, with this in view, the next of kin shall be given the opportunity to designate final burial in one of the following places: a United States national cemetery; a local or private cemetery in the homeland of the next of kin; any American military cemetery which may be established abroad nearest the place of temporary burial; a local cemetery abroad nearest the place of temporary burial.

b. All World War II unknown dead will be returned for re-burial in United States national cemeteries.

c. Government sponsored pilgrimages to the graves of the dead buried overseas are not favored.

d. Permanent American military cemeteries will be established and maintained abroad if the number of requested burials therein justifies their establishment.

e. The Government will assume all costs incident, to:

- (1) Burial of remains in United States national cemeteries or in American military cemeteries abroad.
- (2) Burial in local cemeteries abroad.
- (3) Delivery of remains to the next of kin, as authorized for military personnel in AR 30-1830.

8. At a conference of the interested Staff Divisions, ASF and the Quartermaster-General, it was agreed to delete the original paragraph 3c (3)d of the plan to which G-1 and OPD expressed objection. With this change accomplished, G-1, G-4, OPD and ASF concur in the plan.

ACTION RECOMMENDED

That the entire plan be approved and that the Quartermaster General be authorized to implement the plan, or portions thereof, as conditions and circumstances warrant.

/s/ RAY E. PORTER

1 Incl
QMG Plan

RAY E. PORTER
Major General, USA
Director, Special Planning
Division

Approved

By order of the Secretary of War

THOS. T. HANDY

Deputy Chief of Staff, U.S. Army

By H. I. HODES

Brig. Gen., G.S.C., Asst. Deputy Chief of Staff

NOTED-DEPUTY CHIEF OF STAFF
U.S. ARMY

APPROVED

By direction of Under
Secretary of War

HERBERT A. FRIEDLICK, Colonel
Assistant

ARMY SERVICE FORCES
OFFICE OF THE COMMANDING GENERAL
WASHINGTON 25, D. C.

SPOPD 293

12 September 1945

MEMORANDUM FOR THE QUARTERMASTER GENERAL, ARMY SERVICE FORCES:

Subject: Current Plan for Return of American Dead and
Establishment of Overseas and US Cemeteries.

1. Reference is made to the attached Summary Sheet, dated 8 September 1945, subject as above, and its inclosure, which contains the approval of the plan of the Quartermaster General for return of American dead and establishment of overseas and United States cemeteries.

2. In implementing the plan and in referring to the policies contained in the plan cognizance should be taken of the fact that legislative authority will be necessary before the War Department policies can be completely effectuated.

3. The classification of the inclosure and of memorandum, SPOPD 293, 30 November 1944, for the Quartermaster General, ASF (Attn: Memorial Division - Colonel R. P. Harbold), subject as above, is cancelled, in accordance with authority contained in paragraph 15, AR 380-5, 15 March 1944.

4. It is desired that you implement the plan referred to above or portions thereof as conditions and circumstances warrant.

BY COMMAND OF GENERAL SOMERVELL:

/s/ HENRY C. WOLFE

HENRY C. WOLFE,
Brigadier General, USA
Director, Planning Division, ASF.

1 Incl.

Summary Sheet, 8 Sept 45
w/1 Incl as listed.



PLAN FOR
REPATRIATION OF THE DEAD OF WORLD WAR II
AND ESTABLISHMENT OF PERMANENT UNITED STATES
MILITARY CEMETERIES AT HOME AND ABROAD

I. SCOPE - Under the direction of The Quartermaster General United States Army in his capacity as Chief, American Graves Registration Service to:

1. Plan for and carry out in all Theaters of Operation of the current war, the work involved in returning the remains of American dead to include military, naval and other personnel who served with our forces outside the continental United States, to the United States and their delivery to the next of kin at place of their selection for private interment or interment in national cemeteries.

2. To acquire necessary land, lay out, improve, construct necessary buildings and provide for the beautification and maintenance of new national cemeteries and extension of existing national cemeteries in the United States in accordance with the provisions of H. R. 516 and report submitted thereon by The Quartermaster General, dated 15 February 1945, Exhibit #A attached, if and when said bill is enacted into law and necessary funds are appropriated therefor.

3. Prepare and submit through regular channels draft of legislation for acquisition of necessary land and the establishment of a limited number of permanent cemeteries on foreign soil for concentration of the remains of our World War II dead, whom the next of kin specifically indicate they desire to remain buried abroad.

II. FACTUAL CONSIDERATIONS AND ASSUMPTIONS

1. Recorded burials total 165,995 Army and approximately 25,000 Navy, Marine Corps and Coast Guard personnel, an aggregate of approximately 191,000 burials. Total casualties in all theaters of operation would appear to warrant an assumption of over 300,000 overseas burials before the conclusion of hostilities.

2. As of 30 April 1945 total reported Army deaths (battle casualties) in the European and Mediterranean Theaters were 108,731 and 36,274 respectively. Total Army deaths (battle casualties) in all other theaters as of 30 April 1945 were 29,651, an aggregate total 30 April 1945 of 174,656. To this may be added in excess of 22,000 non-battle deaths overseas.

3. These figures may be expected to be increased by several factors:

- a. While most isolated graves in North Africa and Italy have been located and the remains concentrated into established temporary U.S. Military Cemeteries, there were on 30 April 1945 still 44,243 members of the military in the European Theater reported as currently missing in action. It would appear to be a logical assumption that at least eighty to ninety per cent of such personnel is deceased.
- b. Many isolated burials in France, Belgium, and Holland have been recorded but burial reports will not be filed until such remains are exhumed, identified or classed as unknown with all available information recorded, and reinterred in temporary U. S. Military Cemeteries.
- c. There are undoubtedly several thousand burials in the Lowlands, Germany, Austria, and the Balkans, which by painstaking work can now be located and concentrated into established temporary U.S. military cemeteries in friendly countries.
- d. Location of isolated burials in other areas, principally the Pacific, will to some extent also increase the number of recorded burials, but for obvious reasons, such as amphibious operations and the barbaric nature of the enemy in handling deceased bodies, the actual percentage of recovery of remains of personnel reported missing in action will be much smaller.
- e. As an overall picture, graves of fifty per cent or more of the 44,243 missing in action in the European Theater of Operations may be expected to be located and concentrated into established military cemeteries, but as heretofore stated the percentage of recovery in the Pacific will be relatively small.

4. As indicative of the task involved in returning the remains of deceased U. S. Military and other personnel to their native land for final burial, there were of record in the Memorial Division, Office of The Quartermaster General as of 1 May 1945,

454 cemeteries or recorded burial sites located in 86 countries, islands or groups of islands throughout the world. The cemeteries and burial sites of record include all types, temporary military, private and communal and range from one to over 17,000 burials in the largest, U. S. Military Cemetery, Henri Chapelle, Belgium.

5. As illustrative of the task confronting the Graves Registration Service the cemeteries now established in the Mediterranean and European Theaters are listed below. In the Pacific Areas the problem will be even greater due to numerous cemeteries scattered over many widely dispersed islands and land masses.

a. U. S. Military Cemeteries--Mediterranean Theater of Operations

NORTH AFRICA	<u>U. S.</u>	<u>Allied</u>	<u>Enemy</u>	<u>Total</u>
<u>Algeria:</u>				
Constantine	349	--	8	357
Algiers	285	1	5	291
Oran	946	134	69	1,149
Souk Ahras	165	--	1	166
Tebessa	369	--	102	471
<u>French Morocco:</u>				
Casablanca	341	32	13	386
Fedala	62	--	--	62
Fort Kasba, Port Lyautey	94	1	--	95
<u>Tunisia:</u>				
Beja	451	--	128	579
II Corps Cemetery, near Mateur	669	--	36	705
Gafsa	744	4	277	1,025
Hadjeb el Aïoun	272	5	67	344
Ksar Mezouar	98	--	5	103
Civilian Cemetery, Tunis	<u>367</u>	<u>3</u>	<u>27</u>	<u>397</u>
TOTAL	5,212	180	738	6,130
CORSICA				
U.S. Military Cemetery, Ajaccio	28	--	1	29
U.S. Military Cemetery, Bastia	201	34	5	240
American Cemetery, Calvi	<u>3</u>	<u>--</u>	<u>--</u>	<u>3</u>
TOTAL	232	34	6	272

ITALY	<u>U. S.</u>	<u>Allied</u>	<u>Enemy</u>	<u>Total</u>
Allied Cemetery, Naples	1,154	128	72	1,354
Alvignano	59	--	19	78
Avellino	736	2	186	924
Bari	1,298	4	--	1,302
Capriati	114	1	--	115
Carano	1,587	--	498	2,085
Castelfiorentino	2,099	--	545	2,644
Follonica	1,328	15	360	1,703
Granaglione	31	--	23	54
Marzanello Nuovo	2,945	24	148	3,117
Mt. Soprano	889	20	231	1,140
Nettuno	6,060	61	2,604	8,725
Mt. Beni	942	--	71	1,013
Piedmont D'Arienica	1	--	--	1
Ponza Island	1	7	2	10
Prata	67	--	--	67
R. Frattelle	479	38	306	823
Senigallia	29	--	--	29
Tarquinia	557	--	316	873
Vada	623	57	104	784
	<hr/>	<hr/>	<hr/>	<hr/>
TOTAL	20,999	357	5,485	26,841

JUGOSLAVIA

Allied Cemetery, Vis Island	22	--	--	22
Toplik Cemetery	2	1	--	3
Cemetery, Mostar	1	--	--	1
Cemetery of Dalga Vas/Kaceoje	2	--	--	2
Crnomelj Cemetery/Slovenia	1	--	--	1
Cemetery, Metkovic	1	--	--	1
Cemetery, Kalasin	1	--	--	1
	<hr/>	<hr/>	<hr/>	<hr/>
TOTAL	30	1	--	31

MALTA

Royal Navy Cemetery, Cappucini	9	--	--	9
Pieta Cemetery	1	--	--	1
	<hr/>	<hr/>	<hr/>	<hr/>
TOTAL	10	--	--	10

SARDINIA

St. Michael's Cemetery, Cagliari	97	31	1	129
----------------------------------	----	----	---	-----

SICILY	<u>U. S.</u>	<u>Allied</u>	<u>Enemy</u>	<u>Total</u>
U.S. Military Cemetery #1, Licata	147	3	42	192
U.S. Military Cemetery #2, Gela	1,056	14	515	1,585
U.S. Military Cemetery #3, Caronia	630	5	665	1,300
U.S. Military Cemetery #4, Palermo	<u>217</u>	<u>34</u>	<u>5</u>	<u>250</u>
TOTAL	2,050	56	1,227	3,333
TOTAL-MEDITERRANEAN THEATER	28,630	659	7,457	36,746

b. U. S. Military Cemeteries - European Theater of Operations

BELGIUM

Fosse	2,200	96	1,600	3,896
Foy	2,535	26	3,687	6,248
Henri-Chapelle	17,323	191	10,067	27,581
Overrepen	<u>0</u>	<u>0</u>	<u>170</u>	<u>170</u>
TOTAL	22,058	313	15,524	37,895

ENGLAND

Brookwood	3,633	0	0	3,633
Cambridge	<u>5,386</u>	<u>0</u>	<u>0</u>	<u>5,386</u>
TOTAL	9,019	0	0	9,019

FRANCE

Andilly	3,306	158	4,914	8,378
Blosville	5,314	0	0	5,314
Calas	0	0	34	34
Champigneul	1,156	78	587	1,821
Dorviller	0	0	22	22
Draguignan	894	93	422	1,409
Epinal	7,478	27	4,721	12,226
Gorron	735	0	1,010	1,763
Grand-Failly	2,787	69	1,508	4,364
Hochfelden	1,092	13	564	1,669
LaCambe	4,534	0	1,870	6,404
LeChene Guerin	1,202	0	1,200	2,402
Lesneven	0	0	2,183	2,183

FRANCE	<u>U. S.</u>	<u>Allied</u>	<u>Enemy</u>	<u>Total</u>
Limey	5,832	0	0	5,832
Luynes	489	0	298	787
Marigny	3,059	0	4,189	7,248
Montelimar	153	0	316	469
Neiderbronn	532	0	349	881
Neuville-en-Condroz	755	27	898	1,680
Orglandes	0	0	7,080	7,080
Solers	1,275	7	331	1,613
St. Andre	1,103	0	750	1,853
St. Avoild	1,667	16	1,189	2,872
St. Corneille	524	50	280	854
St. James	4,220	0	2,014	6,234
St. Juan	988	0	735	1,723
St. Laurent	3,797	0	1,293	5,090
St. Martin	0	0	189	189
St. Mere Eglise #1	2,200	0	1,000	3,200
St. Mere Eglise #2	4,800	0	0	4,800
Villeneuve-sur-Auvers	303	0	225	528
Varois	132	67	47	246
TOTAL	60,327	605	40,218	101,168

GERMANY

Bad Kreuznach	0	0	139	139
Bensheim	2,722	69	1,583	4,374
Breuna	1,520	154	378	2,052
Buderich	0	0	65	65
Butzbach	662	109	448	1,219
Eisenach	537	29	305	871
Hardt	0	0	900	900
Heidsheim	0	0	79	79
Ittenbach	1,562	171	1,102	2,835
Nurnberg	618	27	262	907
Rheinberg	0	0	249	249
Senne	0	0	243	243
Sinzig	0	0	461	461
Stromberg	900	7	572	1,479
Vorde	0	0	618	618
Wickrathburg	0	0	9	9
TOTAL	8,521	566	7,413	16,500

HOLLAND

Margraten	8,886	200	3,000	12,086
-----------	-------	-----	-------	--------

HOLLAND	<u>U. S.</u>	<u>Allied</u>	<u>Enemy</u>	<u>Total</u>
Molenhoek	795	41	123	959
Zon	<u>416</u>	<u>48</u>	<u>232</u>	<u>696</u>
TOTAL	10,097	289	3,355	13,741
IRELAND				
Lisnabreeny	142	0	0	142
LUXEMBOURG				
Hamm	7,158	0	5,380	12,538
GRAND TOTAL	117,322	1,773	71,890	190,985

6. Immediately upon cessation of hostilities in any theater of operations, it is contemplated that all Graves Registration Companies will be utilized to:

- a. Conduct, when required, a re-search of the battle-fields for unburied remains and isolated graves.
- b. Contact local officials and other civilians in an endeavor to locate the graves and develop information to identify persons known to be missing in action in a given area.
- c. To secure information on all burials in other allied, neutral and enemy countries in the theater.
- d. Disinter from isolated graves and from local and communal cemeteries, identify or record all information on those classed as unknown, and concentrate such remains into established United States military cemeteries.

7. Prior to the withdrawal of regularly constituted Graves Registration Service Companies from a theater for redeployment or for other pertinent reasons "Cemetery Security, Caretaking and Maintenance Teams" will be organized, in accordance with Phase 1, Inclosure 2, Tab "B", to letter AG 322 (24 Jan 45) OB-I-SPOPP-M, dated 30 January 1945, Exhibit "B" attached. Also sector, zone and area headquarters where required should be phased in as therein outlined for interim operations only. At the time concentration and repatriation activities are begun

under phase 4 of the exhibit, referred to above, the type of overall organization setup recommended hereinafter (par. 3c (2), Sect. V) should be adopted. Moreover, to carry out interim work, prior to the beginning of the repatriation of the dead, sufficient exhumation and identification teams must be authorized for each sector, under Phase 1, mentioned above, to search out and identify any remaining isolated or unrecorded burials and to concentrate them into established temporary U.S. military cemeteries. Further, enemy countries such as Germany, Austria, and the Balkans must be organized into sectors for the search of United States dead, during the interim period between combat and repatriation.

8. Due to the present and anticipated future requirements for manpower, transportation (land and water) and raw materials, the actual beginning of field operations for the repatriation of the dead should be deferred until approximately six months after the cessation of all hostilities. However, such a decision does not obviate the immediate necessity for the determination of all matters of policy and the firming up of an administrative organization which will be prepared to build up and supervise operations of field units within a reasonable time after the cessation of hostilities.

9. In the interim period, if the repatriation of the dead is going to be handled in an orderly, efficient, expeditious and economical manner, the following must be accomplished:

- a. Legislation enacted and funds appropriated looking to the establishment of new and the extending of existing national cemeteries as now under consideration in H R 516.
- b. Secure legislative authorization and appropriation of sufficient funds to acquire the right to use, in perpetuity, of such land as may be required for a limited number of World War II permanent cemeteries abroad.
- c. Contact through the State Department, or direct, if authorized, foreign governments with a view to:
 - (1) Securing authorization for disinterments and use of facilities including ports, land and water transportation, storage, warehousing, etc.
 - (2) Make preliminary arrangements for the transfer of the dead between Allied countries.
 - (3) Make arrangements to transfer care of enemy cemeteries or enemy dead in temporary U. S.

military cemeteries to the custody of the country where located.

- d. Secure contract authorization and award contracts for the manufacture of caskets and other equipment required for the repatriation of the dead, actual manufacture to begin immediately after the cessation of hostilities and to be based on delivery schedule to meet planned requirements of operating field sections in all theaters of operation.
- e. Based on the consideration of all pertinent factors, plan on area, zone and sector setup for the various theaters with a view to the repatriation of the dead in a period of one to one and a half years from date of commencement of operations. To carry such a plan beyond the paper stage will require an immediate determination as to what extent military personnel will of necessity or otherwise be replaced or augmented by civilian employees. If military personnel are mainly utilized, it should be to a large extent on voluntary basis, due to the nature of the operations and the fact that such projects will extend to approximately two years after cessation of hostilities.

III. POLICIES

1. The War Department policies on final disposition of the remains of American World War II overseas dead are as follows:

- a. All feasible wishes of the next of kin will be complied with and, with this in view, the next of kin shall be given the opportunity to designate final burial in one of the following places:
 - (1) Any U. S. National Cemetery.
 - (2) Any local or private cemetery in the Homeland of the next of kin.
 - (3) The American military cemetery which may be established abroad nearest the place of temporary burial.

(4) The local cemetery abroad nearest the place of temporary burial.

- b. All World War II unknown dead will be returned for reburial in U. S. National cemeteries.
- c. Government sponsored pilgrimages to the graves of the dead buried overseas are not favored.
- d. Permanent American military cemeteries will be established and maintained abroad if the number of requested burials therein justifies their establishment.
- e. The Government will assume all costs incident to:
 - (1) Burial of remains in U.S. National cemeteries or in American military cemeteries abroad.
 - (2) Burial of remains in local cemeteries abroad.
 - (3) Delivery of remains to the next of kin as authorized for military personnel in AR 30-1830.

2. The above policies will be implemented as follows:

- a. The next of kin of all known overseas dead will be polled to determine their wishes as to the final disposition of remains. Their decisions must be in the hands of the War Department not later than three (3) months from the date of the letter of notification to the next of kin.
- b. Operations for the final disposition of the remains of the dead will begin as soon as possible after enactment of necessary legislation.
- c. Where final burial is to be made in local or private cemeteries in the National Territory of the United States, delivery of the remains will be made as designated by the next of kin and Government responsibility will then terminate.
- d. The dead whose next of kin fail to express a desire as to disposition of the remains will be reburied in American military cemeteries abroad, if

such are established, otherwise they will be returned for final burial in United States National cemeteries.

- e. The Government will arrange, if possible, for burial rights in perpetuity, effect the reburial, if necessary, and then relinquish responsibility to the next of kin for subsequent care and maintenance of graves in local cemeteries abroad as follows:

- (1) Where the dead are already buried and the next of kin requests that the remains be not disturbed.
- (2) Where the next of kin request burial in local cemeteries abroad.

- f. In cases where the next of kin desire burial in specified local cemeteries in their homeland, delivery of the remains will be made as specified in 1 e (3) above.

- g. In areas where burial in local cemeteries or in American military cemeteries abroad is impracticable, all of the dead will be repatriated.

3 a (1).

- (a). Paragraphs included in policy statement above.

(b). The present trend of requests from the next of kin with relatives buried in the European, North African and Mediterranean Theaters indicates that far more than 70 per cent of such relatives will desire the remains of their loved ones returned for final burial in their native land. In fact, if national cemeteries are authorized in each state and the policies hereinbefore enumerated are announced by the War Department, such requests may approximate 95% of the total. Requests for return of remains from other theaters including the entire Pacific Area indicate a similar trend. However, receipt of burial information from the Pacific Areas is very slow with the consequent result that correspondence to date with relatives of those buried in that area does not furnish as good a cross section of their wishes as for other theaters. But when for the Pacific Areas the distances from the native land are considered, together with the fact that many burials are scattered among inaccessible islands and the probable necessity for original burials on enemy territory, undoubtedly the ultimate results for this area will be that, as compared with other theaters, an even higher percentage of the next of kin will desire return of the remains of their loved ones to the United States.

3 a (2). H. R. 516 and a companion bill in the Senate, S 524, 79th Congress, now under consideration by the Congress, provide for the establishment of one new national cemetery in each state of the Union and such other cemeteries as may be needed for the burial of war veterans. A report, see Exhibit "A", attached, prepared in the Office of The Quartermaster General (15 Feb 1945) at the request of the Committee on Military Affairs, recommends the establishment of 79 new national cemeteries and the extension of thirteen existing cemeteries in the United States and its possessions.

Attention is invited to the fact that, while the study referred to would provide a plan for burial sites in national cemeteries for bodies returned from overseas under the conditions of this memorandum, that is not its primary purpose. The purpose of the proposed legislation is to meet a long-range policy of providing for the future burials of present veterans of past wars as well as those who may be veterans of World War II and their dependents whose interment may in the future be desired in the national cemeteries.

3 a (3).

(a). It is recommended that the provisions of paragraph 1, Section II, Graves Registration, War Department Circular No. 2, 1 January 1945, be amended so as to charge The Quartermaster General as Chief, American Graves Registration Service, with full and complete responsibility for the return to the United States or shipment to another foreign country, if so requested by next of kin, of all American dead, outside the continental limits of the United States, except personnel of the State Department not serving with the Army or Navy in theaters of war at time of death (see paragraph 3 b, below, as to concurrences) and for the creation of necessary additional cemeteries in overseas areas. The creation of additional cemeteries in overseas areas will be subject to legislation authorizing the acquisition of the right to use in perpetuity such land as may prove to be necessary.

(b). Actual requirements for permanent cemeterial sites abroad can not be pre-determined inasmuch as such requirements will be controlled in the final analysis by the expression of the desires of the next of kin. Therefore, within the bounds of reasonable limitations, The Quartermaster General should be vested with suitable statutory authority to acquire such rights to use of land as subsequent events indicate are clearly required.

3 a (4).

(a). It is contemplated that addresses of next of kin will be used as already obtained from the records of the Adjutant General's Office. Where the next of kin is not known, correspondence will have to be conducted by The Quartermaster General with the emergency addressee in an endeavor to establish the identity and address of the next of kin. Forms asking the next of kin to express a desire as to final disposition of remains will be based on planned operations and will not be mailed until a reasonable time before actual exhumations are due to begin in a given area. Such procedure will avoid too great a lapse of time before the actual return of the body. Otherwise, lapses of long periods of time would cause complaints and inevitable changes in next of kin and result in a large unnecessary volume of correspondence.

(b). The degree of kinship (affinity or consanguinity) that has paramount right in directing the final disposition of the remains will be on practically the same basis as used after the last war and will be as follows:

(1) In the case of unmarried personnel:

- (a) Father, if he is not disqualified, i.e., has not abandoned the support of his family.
- (b) Mother, if the father is dead or disqualified.
- (c) Brother, if both parents are dead or if the mother is deceased and the father is disqualified, and in the case of more than one brother, the oldest living.
- (d) Sister, if both parents are dead or if the mother is deceased and the father disqualified and there are no living brothers, and, if more than one sister, the oldest living.

(2) In the case of married personnel:

- (a) Widow (widower), if she (he) has not remarried.
- (b) Child, if the wife (husband) is deceased or has remarried and in case

of more than one child, the oldest living, except, that in the case of a minor, such request shall be made through the duly appointed guardian.

- (c) Other relatives in the order set forth above for unmarried personnel.

(c). In addition, the person making such request will be required to execute a sworn affidavit to the effect that no other person under the regulations as stated has a right paramount to that of the affiant. The form should contain a notation to the effect that any false statement would be subject to the penalties provided in the case of perjury, citing the applicable statute.

3 a (5).

(a). There must in all cases be fixed a date after which requested disposition of remains will be irrevocable. A fixed date should not be the same for all requested dispositions but should be based on date of actual operations in a given cemetery or area. Such irrevocable date can be filled in on the form when mailed to the next of kin. A circular letter accompanying the form setting forth the War Department policies and showing what alternatives are available for the disposition of remains should hold subsequent requests for changes to a minimum.

(b). Considering the global aspects of the repatriation and concentration activities, with the vast distances involved, Graves Registration Service personnel cannot, obviously, return to the same cemeteries repeatedly to exhume bodies as occurred, in some instances, after the last war. All bodies, except in sites selected for permanent cemeteries, must be exhumed in one operation and shipped either to the United States or to permanent cemeteries abroad. Bodies once concentrated into permanent cemeteries should not be further disturbed. Any material number of disinterments from a permanent cemetery would require a reconcentration of plots and affect or destroy the planned lay-out.

(c). In case of death of next of kin and in the absence of or non-availability of the next in line, but after exhumation and shipment or under other unforeseeable circumstances, final disposition will be made by burial in a national cemetery.

3 a (6).

(a). It is not considered advisable to start repatriation and concentration activities until approximately six months after the cessations of all hostilities, based on the considerations listed below:

- (1) The magnitude of detailed planning and arrangements required immediately before actual operations.
- (2) The need for a large officer and technical force not readily available under the present manpower situation.
- (3) The scarcity of available motor, land and water transportation, docks, warehouse facilities.
- (4) The present non-availability of raw materials for the manufacture of caskets, shipping cases, etc.

(b). Assuming the correctness of the foregoing premise, there would appear to be no logical reason why operations should not begin simultaneously in all theaters. At such time there should be sufficient personnel, transportation and supplies and material available for such extensive operations. In fact, from considerations of public opinion such action would appear highly desirable. However, due to the many unforeseen and unpredictable circumstances that may arise in the Pacific Area, it is not known at this time whether operations in that area could be completed as soon as in other theaters.

3 a (7). Any changes or contemplated changes in policies affecting the Battle Monuments Commission will be brought to the attention of and coordinated with the Commission.

IV. JURISDICTION

3 b (1). Concurrence and approval has been secured from the Navy Department (covering Navy, Marine Corps, Coast Guard and their civilian personnel), War Shipping Administration, American Red Cross, American Field Service, United States Compensation Commission and the Air Transport Command to the effect that the return from overseas of their dead and the creation of United States cemeteries in areas where dead are not to be returned should be the responsibility of the American Graves Registration Service, under The Quartermaster General as the Chief of such Service. Originally, the State Department also concurred, but withdrew its concurrence at the time of the change in its personnel incident to the resignation of the Honorable Cordell Hull.

V. OVERSEAS

3 c (1). Proposed Permanent Cemeteries.

As shown by the attached outline map, Exhibit "C", attached, based on present incomplete information from the theaters, the following locations would appear suitable and desirable for permanent cemeteries abroad, if required:

			Present U.S. Burials Within The General Area
<u>UNITED KINGDOM</u>			
U.S. Military Cemetery	Cambridge	England	9,161
<u>FRANCE</u>			
<u>NORMANDY AND BRITTANY PENINSULAS:</u>			
U.S. Military Cemetery	St. Laurent	France	30,385
U.S. Military Cemetery	St. James	France	
<u>NORTH CENTRAL FRANCE:</u>			
U.S. Military Cemetery	Solers	France	3,999
<u>EAST CENTRAL FRANCE:</u>			
U.S. Military Cemetery	Epinal	France	11,844
U.S. Military Cemetery	Liney	France	12,457
<u>BELGIUM</u>			
U.S. Military Cemetery	Henri Chapelle		21,840
<u>HOLLAND</u>			
U.S. Military Cemetery	Margraten	Holland	10,097
<u>LUXEMBOURG</u>			
U.S. Military Cemetery	Hamm	Luxembourg	17,701
<u>ITALY</u>			
New U.S. Military Cemetery to be established on the Via Apia Antigua Highway South of Rome		Italy	21,358

U.S. Military Cemetery	Palermo	Sicily	2,050
------------------------	---------	--------	-------

NORTH AFRICA

New U.S. Military Cemetery	Tunis	Tunisia	5,222
----------------------------	-------	---------	-------

NORTH AMERICAN ZONE

New U.S. Military Cemetery	Juneau	Alaska	Information Incomplete.
----------------------------	--------	--------	----------------------------

CARRIBBEAN ZONE

New U.S. Military Cemetery	Rio Piedras, near San Juan	Puerto Rico	Information Incomplete.
----------------------------	-------------------------------	-------------	----------------------------

New U.S. Military Cemetery	Near Corozal	Canal Zone	Information Incomplete.
----------------------------	--------------	------------	----------------------------

HAWAIIAN ZONE

New U.S. Military Cemetery	Honolulu	Hawaii	Information Incomplete.
----------------------------	----------	--------	----------------------------

AUSTRALIA

U.S. Military Cemetery	Townsville	Australia	Information Incomplete.
------------------------	------------	-----------	----------------------------

PHILIPPINE ISLANDS

New U.S. Military Cemetery	Bataan, or other suit- able site near Manila		Information Incomplete.
----------------------------	---	--	----------------------------

Present known facts and conditions do not warrant recommendations for any proposed permanent cemeteries in China, India, Burma, the Malay States or the Dutch East Indies. Based on present number of burials in these areas, all bodies should be disinterred and returned to the United States. However, subsequent developments may alter the situation.

It is the intention of the Graves Registration Service to disinter for concentration or return to the United States, all bodies buried in Central and South America, except the Canal Zone; in Africa, except the North African Theater of Operations; the Middle East; and from all islands in both the Atlantic and Pacific Oceans, except Hawaii, the Philippines and Puerto Rico.

In any case where the next of kin requests that the remains be not disturbed, such wish will be complied with, if practicable, and the person making the request agrees to relieve the United States Government from further responsibility.

3 c (2). Organization and Functions.

There are attached tentative organization charts Exhibits "D", "E", "F", "G", showing proposed area and zone setups for all countries, islands or groups of islands, with the exception of Japan and Manchukuo, wherein concentration, exhumation and other activities of the Graves Registration Service will be or are anticipated to be required for the repatriation of the dead.

Personnel requirements for the Headquarters, European and Mediterranean Area and Headquarters, Southwest Pacific and Asiatic Area will be as set forth in Inclosure 3, Tab "B", letter AG 322 (24 Jan 45) OB-I-SPOPP-M, dated 30 January 1945, Exhibit "B", attached. However, it is considered advisable to cotemplate the substitution of civilian employees for most of the enlisted grades set forth in the cited inclosure. This proposed substitution is due to the fact that repatriation activities will not commence until approximately six months after the cessation of all hostilities and may require from one to one and one half years thereafter to complete. Further, the motor transportation provided in the reference, above, is inadequate for the scope of the operation involved and will receive further study as to actual requirements when all factual data is available.

The functions of an area headquarters are enumerated under the same inclosure.

Inclosures Nos. 1 and 2, Tab "B", to the letter referred to above, cover setups for zone and sector headquarters and cemeterial, exhumation and reception teams, respectively. These types of administrative and operating units should be employed only during the interim period from the time of withdrawal of regularly constituted Graves Registration Service companies to the actual beginning of repatriation activities (Phase 4) with the exception of "Cemeterial Teams" which may be required for a longer period. Also, as previously stated, "Exhumation Teams" should be provided for concentration and identification activities under Phase 1, 2, and 3, and be replaced by a different organization setup under Phase 4.

Zone Headquarters

The attached Exhibits "D", "E", "F", "G", provide for a total of fourteen administrative zones. Of these, five are under

the control of the European and Mediterranean Area, and a like number under the Southwest Pacific and Asiatic Area. Four zones, the North American, Hawaiian, Caribbean and African, except the former North African Theater of Operations, will be under the direct control of the Office of The Quartermaster General. The overall function of a Zone Headquarters will be general supervision and control of a number of field sections, varying in number depending on the number of burials in a particular zone engaged in exhumation and concentration activities and port offices serving such field operating sections.

The detailed organization setup, duties and responsibilities of a zone headquarters will be similar to the area organization with certain obvious sections and sub-sections omitted or combined.

Zone headquarters setups are based on geographical areas and total personnel requirements will vary under different conditions depending on the number of field operating sections, ports, burials, and whether operations are principally land or amphibious.

Maximum personnel requirements for a zone headquarters are as follows:

Commissioned Personnel:

- 1 Colonel - Chief of Zone
- 1 Lt. Colonel - Executive Officer
- 4 Majors - Division and Branch Chiefs
- 8 Captains - Chief of Sections: Inspector,
Medical Officer, Finance Officer,
Chaplain, and Adjutant
- 5 1st Lieutenants - Assistants
- 3 2nd Lieutenants - Assistants

Total: 22 Commissioned Officers

2 Warrant Officers - Headquarters

Enlisted Men:

- 1 Technical Sergeant - Garage
- 1 Technical Sergeant - Medical
- 1 Technical Sergeant - Finance

Total: 3 Enlisted men

Civilian Personnel:

- 1 Chief Clerk
- 5 Principal Clerks
- 4 Convoyers
- 15 Clerk Stenographers
- 20 Clerk Typists
- 12 Typists
- 2 Janitors
- 6 Messengers
- 2 Automobile Mechanics
- 2 Helpers
- 23 Chauffeurs

Total: 92

Vehicles:

- 4 Sedans
- 12 Trucks, $1\frac{1}{2}$ Ton
- 4 Trucks, $2\frac{1}{2}$ Ton
- 1 Jeep
- 2 Ambulances

Total: 23

Field Operating Section

Field Operating Sections will be mobile units engaged primarily in the exhumation, identification, preparation and casketing of bodies of United States dead for return to the United States or for concentration into permanent United States cemeteries abroad. Such sections are based on four embalming groups, each capable of handling ten bodies a day or a total of forty bodies per section in areas where large numbers of remains are concentrated into temporary cemeteries. In addition, each section will include three commissioned officers, one captain as master of the section and two first lieutenants each responsible for the work of two embalming groups; the necessary clerical personnel to prepare detailed records and disinterment reports; convoyers to guard bodies while in storage and in transit to concentration points or ports; a transport section, and required laborers, hired locally.

Section Organization

Commissioned Personnel:

- 1 Captain - Chief of Section
- 2 Lieutenants - Inspection

Total: 3

Civilian Personnel:

1 Foreman
4 Embalmers
8 Technical Assistants
4 Checkers
1 Clerk Stenographer
3 Typists
4 Convoyers
1 Liaison Agent and Supply Clerk
1 Auto Mechanic
1 Auto Helper
14 Chauffeurs

Total: 42

Vehicles:

1 Passenger Car
1 Truck, 2 $\frac{1}{2}$ Ton
9 Trucks, 1 $\frac{1}{2}$ Ton
2 Jeeps
1 Ambulance

Total: 14

The entire repatriation and concentration activities are tentatively estimated to require fifty-five field sections distributed by zones as follows:

<u>European and Mediterranean Area</u>	<u>Field Sections Required</u>
Zone of Great Britain	2
Zone of Western Europe	12
Zone of North and Central Europe	9
Zone of South, Southeast Europe and North Africa	7
Zone of Middle East	1
 <u>Southwest Pacific and Asiatic Area</u>	
Zone of Philippine Islands	3
Zone of India-Burma	2
Zone of Australia	3
Zone of Dutch East Indies & Malay States	1
Zone of China (Tentatively includes Japan and Manchukuo)	7

<u>American Area</u>	<u>Field Sections Required</u>
Zone of North America	2
Zone of Hawaii	3
Zone of Caribbean	2
Zone of Africa except North Africa	<u>1</u>
	Total: 55

Port Quartermaster Officers

Port offices will need to be set up in each zone. These will be generally the established ports of the country or ports which offer best facilities for receiving incoming supplies from the United States, and permitting their expeditious distribution by means of railroads, highways or coastwise water routes. They will also be the shipping ports for bodies to be returned to the homeland. This makes the functions of the port extremely diversified, the principal ones being:

- a. Receipt of supplies
- b. Distribution of supplies to sections in the field
- c. Inspection, testing and repair of caskets, shipping cases, etc., received from the United States
- d. Manufacture of packing pillows for caskets and other essential items
- e. Receipt and storage of casketed bodies from concentration points and rail heads
- f. Inspection of cases received, cleaning shipping cases, replacing broken handles, etc.
- g. Loading bodies on transport
- h. Accomplishment of bills of lading, manifests, etc.

It is believed that two port Quartermaster offices will suffice for most zones. In some of the island areas it may be advisable to establish additional ports to avoid transshipments. On the continent of Europe and possibly Asia, the disrupted and destroyed railroad facilities may compel establishing additional ports. The uncertainties involved at this time, as well as the present lack of information as to the future operations, will not permit more than a general estimate as to the port office establishment and its principal functions.

Port Organization (Quartermaster)

Commissioned Personnel:

1 Major
1 Captain
1 1st Lieutenant

Total: 3

1 Warrant Officer

Enlisted Men:

2 Technical Sergeants

Civilian Personnel:

1 Chief Clerk
1 Principal Clerk
3 Clerk Stenographers
6 Clerk Typists
4 Convoyers
1 Embalmer
2 Technical Assistants
2 Checkers
1 Auto Mechanic
1 Mechanic Helper
1 Carpenter
15 Chauffeurs
2 Janitors
4 Messengers

Total: 44

Vehicles:

2 Passenger Cars
12 Trucks, $2\frac{1}{2}$ Tons
8 Trucks, $1\frac{1}{2}$ Tons
2 Jeeps
1 Ambulance

Total: 25

RECAPITULATION OF QUARTERMASTER PERSONNEL REQUIREMENTS

<u>Unit</u>	<u>No. of Units</u>	<u>Commissioned</u>	<u>Personnel Warrant Off.</u>	<u>Enlisted or Civilian</u>	<u>Total</u>
Area Headquarters	2	88	14	284	386
Zone Headquarters	14	308	28	1,330	1,666
Field Sections	55	165	--	2,310	2,475
Port Offices	<u>30</u>	<u>90</u>	<u>30</u>	<u>1,380</u>	<u>1,500</u>
TOTAL	101	651	72	5,304	6,027

Labor Requirements:

Each field section will require from 50 to 80 laborers employed locally. Based on an average of 65 laborers for 55 sections, a total of 3,575

Each port office will require an average of 30 regular laborers in 30 port offices, a total of 900

Total regular labor required 4,475

For periodic unloading of caskets and supplies from ships and for loading caskets containing bodies, each port will require additional labor ranging from 50 to 100 men.

3 c (3) - (a) and (b). Size and Burial Capacity Proposed Cemeteries.

The information shown under paragraph 3 c (1) indicates by general areas the sites presumed to be suitable for permanent cemeteries abroad, if required. In listing these sites appropriate consideration has been given to the historical aspects involved. The acreage required for a permanent cemetery would be largely dependent on two factors: (1) Total permanent burials, and (2) suitable acreage for permanent caretaker's lodges, chapels and utilities. As a general proposition when allowance is made for paths and roadways, burials are computed on the basis of 400 to the acre. For the construction of buildings, for landscaping and beautification around a cemetery and to prevent other developments in immediate proximity, there should be established a peripheral zone of at least 100 yards around the actual burial plots. As an example, a 10-acre cemetery would require approximately 20 acres additional land for a peripheral zone.

The number of permanent cemeteries and actual acreage required cannot be definitely determined until final results of the poll of the next of kin are tabulated. Furthermore, it is the firm belief of the Office of The Quartermaster General from the current trend of requests, that practically all bodies will be returned to the United States. But assuming for comparative purposes, that in the European Theater of Operations thirty per cent or more of the next of kin desired that the remains of their soldier dead be buried abroad, the largest cemetery would be located at Henri Chapelle, Belgium. In this general area there are now 21,840 burials, thirty per cent of which is 6,552 maximum burials for a permanent cemetery at that location. This would require approximately 16 acres for burial purposes exclusive of a peripheral zone. On the same percentage basis, other sites would range from 6 to 12 acres excluding the peripheral zone.

3 b (3). Non-utilization World War I Overseas Cemeteries.

(c). As a matter of general policy, it is not considered advisable to extend or utilize present World War I overseas cemeteries for the permanent burial abroad of World War II dead. Those permanent cemeteries now existent in Europe were planned and laid out on the basis of a pre-determined number of burials. Any extension of such cemeteries would not only affect the symmetry thereof, but there is a definite inborn pride of the veterans of the two different wars which, when associated with the general locality of their sacrifices, requires and justifies such cemeteries being established separate and apart from the other as memorials and fields of honor to the accomplishments of each.

The only cemetery where permanent extension might logically come up for serious consideration is located at Brookwood, England, 28 miles southwest of London, where adjoining land has been used for a total of 3,633 burials. The very nature of the land is not considered the most desirable for burials. The terrain and close proximity of burials other than United States military personnel preclude suitable arrangement of permanent improvement such as chapels, landscaping, etc. On the other hand, the site selected at Cambridge, England, is not only ideal from the standpoint of location and general features of the terrain in and surrounding the cemetery, but readily lends itself to permanent improvements and beautification.

3 c (3) (d). Caskets and Outside Shipping Cases.

Considerable study has been given by the Office of The Quartermaster General and the casket manufacturers of the United States to the design of a casket and shipping case which meet certain specific requirements. These include:

- (1) A standard design to be produced by all manufacturers with simple lines, yet stately and impressive in appearance.
- (2) A type which with reasonable handling under field conditions is not easily marred or damaged by climatic conditions.
- (3) A casket so constructed as to require a minimum of labor for closing and hermetically sealing and securing in shipping case.
- (4) Shipping case of lighter but more durable construction than used after the last war.
- (5) Overall reductions in weight of casket and shipping case, by one-third as compared with type used after the last war. Weight reduction when containing remains from approximately 600 to 400 pounds.
- (6) Inside dimensions of the casket will be: 22" wide, 21" high and 78" long.

At the present time no decision has been reached as to the type of construction to be used in the manufacture of an outside shipping case; however, to date, experiments along this line indicate that a lock-joint type of box which is of dowel and groove construction, with ply-wood used as the stock, to be the most suitable.

The casket would be contained in the proposed shipping box during shipment to theaters of operation and return. The over-all dimensions of the outside box would be approximately 27½" wide, 26" high and 85" long.

The total weight of casket complete with box would be between 275 and 350 pounds, depending on type of lumber used in box construction and the method of packing.

Grave Markers.

The types of grave markers used for permanent cemeteries of World War I in Europe are very durable and impressive in appearance. However, size specification of these crosses and Stars of David limit space for inscriptions. This project is receiving continuing study both as to design and size specifications for markers.

General specification for World War I overseas markers were as follows:

Crosses or Stars of David, of white stone or marble, 47½" high, 20-7/8" wide and 3½" thick, the lower 7-7/8" to be set below the grade; the white stone or marble to be durable, of good uniform texture and strength, free from cracks and defects and any mineral producing stains after weathering, with a minimum bed crushing strength of 10,600 pounds per square inch; all edges to be square cut and all exposed surfaces to be fine axed at least 12-cut or fine sand rubbed, according to the type of stone or marble. Crosses or Stars of David shall be inscribed with the soldier's name in full, rank, unit, division, state and date of death. All headstones shall be individually boxed or crated so as to insure safe delivery by rail or water transportation without breakage or chipping under most exacting shipping conditions.

White marble was the material finally selected for all markers in World War I cemeteries overseas.

3 c (3) (e). Comparative Estimates of Cost for
Returning Bodies or Burying in
Permanent Cemeteries Abroad.

Figures of record for returning approximately 31,000 bodies to the United States after the last war show an average cost of approximately \$400. In addition, there was a maximum allowance of \$100 by the Veterans Administration to each next of kin for funeral expenses for final interment in this country. This allowance under the present available appropriations of the War Department has been reduced to \$50. Based on present incomplete data, it is estimated that the average cost per body delivered to the next of kin, including the \$50 allowance will be \$700 per body. This anticipated average increase on a comparative basis of \$250 per body, while taking into consideration increased salary costs, caskets and other supplies, is principally predicated on higher overall transportation costs. Remains in 40 to 50 per cent of the cases in World War II must be transported two or three times the distance from Europe to the United States which was the only theater in World War I.

It is estimated that to disinter, prepare, casket, transport and reinter bodies in permanent cemeteries abroad would average \$200 per body. Such figure does not take into consideration the average cost per burial for permanent improvement of overseas cemeteries. The eighteen sites proposed in this submission would average at least \$500,000 per cemetery for permanent improvements or a total of \$9,000,000. Assuming 30 per cent or 90,000 bodies of the anticipated total of 300,000 burials remained overseas, this would make an average increase of \$100 per body. A figure of 90,000 burials to remain overseas is far in excess of the number anticipated by the Office of The Quartermaster General to remain permanently abroad. If this figure

was reduced by only 50 per cent or 45,000 burials, it would reduce this cost comparison by another \$100. Annual maintenance cost of overseas cemeteries would average \$15,000, an aggregate annual expenditure of \$270,000, or \$3 to \$6 per grave based on 90,000 or 45,000 burials, respectively. These maintenance costs are relatively much higher than average costs in this country and are due principally to the much smaller number of burials per cemetery. Overseas cemeteries are closed to further burials when established and maintenance costs per grave do not decrease as is the case with many national cemeteries in this country which remain open for future burials.

As an overall picture it would cost approximately \$210,000,000 to return 300,000 bodies to the next of kin for final interment and thereby relieve the Government from further responsibility abroad. To establish and improve eighteen overseas cemeteries containing 45,000 burials, which is considered an over estimate of the number which will remain, would cost: \$200 per body for concentration; \$200 per burial for improvement; \$6 per year per burial for a period of 50 years, a total of \$300, to equal the original cost of \$700 for returning bodies to the United States. However, after this 50 year period, the Government would still have a perpetual obligation for maintenance of overseas cemeteries.

In the opinion of this office, comparative costs of this type are not in any event the primary consideration in a matter so involved with sentiment. Final disposition of our soldier's remains, in accordance with the wishes of their loved ones is an inherent obligation of the Government as the final gesture of a grateful country to those who paid the supreme sacrifice.

3 c (3) (f). Transportation Corps Responsibility
Between Ports of Embarkation and
Debarkation.

The Transportation Corps to have the responsibility to provide the necessary and appropriate water transportation for personnel, equipment and supplies to overseas ports for the American Graves Registration Service, for the return of bodies to the United States, and for the eventual return of personnel, equipment and supplies to the United States. In the shipment of bodies, the Transportation Corps will be responsible for the shipment after the loading of the ship by the Port Officers (AGRS) until the completion of debarkation and delivery to the port representative of the AGRS in the United States port and for the furnishing of stateroom accommodations and meals to the convoyer accompanying the bodies. It will, also,

have the responsibility for the preparation and provision of specially adopted rolling stock for the transportation of bodies from ports of debarkation to distribution centers in the United States.

3 c (3) (g). Coordination of Repatriation Activities with the Transportation Corps.

Preliminary conferences have been held with representatives of the Transportation Corps. Pending the final design of the new type outside shipping case, tentative dimensions have been furnished to permit of necessary consideration in the conversion of Liberty ships and railway rolling stock. Discussion has been had as to the ports to be used and present consideration is given to the ports of New York and San Francisco, with the further possibility of also using Seattle and some southern port on the Atlantic Seaboard. Traffic control between ports of debarkation and the eleven distribution centers now contemplated should be a responsibility of the Transportation Corps.

VI. UNITED STATES.

3 d. Report prepared in the Office of The Quartermaster General (15 February 1945) at the request of the Committee on Military Affairs in connection with H.R. 516 and a companion bill in the Senate, S. 524, 79th Congress, attached hereto as Exhibit "A", covers in detail current plans for national cemeteries in the United States.

LIST OF EXHIBITS

- | | |
|----------------|--|
| 1) Exhibit "A" | "National Cemeteries", A study prepared in the OQMG upon request of Committee of Military Affairs, reference H.R. 516, dated 15 February, two volumes. |
| Exhibit "B" | W. D. Letter, file AG 322 (24 Jan 45) OB-I-SPOPP-M, 30 January 1945, Subject: Organization of The Quartermaster Graves Registration Service. |
| 2) Exhibit "C" | Map: Proposed Permanent Overseas Cemeteries, World War II. |
| Exhibit "D" | Organization Chart: American Graves Registration Service |
| Exhibit "E" | Organization Chart: European and Mediterranean Area. |

Exhibit "F"

Organization Chart: South West Pacific and
Asiatic Area.

Exhibit "G"

Organization Chart: American Area.

- 1) - Omitted as not required for a study of proposed plans for repatriation and overseas concentration of remains.
- 2) - Omitted. Proposed locations are included in the text of the plans and are subject to change.

WAR DEPARTMENT
The Adjutant General's Office
Washington 25, D. C.

AG 322 (24 Jan 45)
OB-I-SPOPP-M

30 January 1945

SUBJECT: Organization for the Quartermaster Graves
Registration Service.

TO: Commander-in-Chief,
Southwest Pacific Area
Commanding Generals,
Theaters of Operations
Defense Commands
Departments
Northwest Service Command
Base Commands.
Commanding Officers,
Base Commands

1. Attached hereto as inclosure 1 is a plan for organization of Graves Registration Service in theaters of operations.

2. The attached plan is furnished for your information and assistance in complying with the provisions of paragraph 2, Section II, Circular 2, War Department, 1945. This plan is not to be construed as a basis for an increase in theater personnel or troop basis.

BY ORDER OF THE SECRETARY OF WAR:

/s/ J. A. ULIO

J. A. ULIO,
Major General,
The Adjutant General.

1 Incl:
(Organization Plan)

Copies furnished:

Assistant Chief of Staff, Operations, WDGS
Assistant Chief of Staff, G-3, WDGS
Director, Mobilization Division, ASF
Director, Military Personnel Division
The Quartermaster General
Commanding Generals, All Service Commands
Military District of Washington.

EXHIBIT "B"

ORGANIZATION
QUARTERMASTER GRAVES REGISTRATION SERVICE
(ZONE OF THE INTERIOR)

Inclosure 1 to letter,
AG 322 (24 Jan 45) OB-I-SPOPP-M,
dated 30 January 1945.

PHASE DEVELOPMENT OF GRAVES REGISTRATION SERVICE AREA COMMANDS AND
SUBORDINATE UNITS REQUIRED FOR THE CARE OF MILITARY CEMETERIES AND/OR
FOR THE REPATRIATION OF AMERICAN WAR DEAD.

I. Responsibilities

1. As the combat zone moves forward and no further need is held for manning the rear areas by service troops in support of combat and prior to the time when responsibilities for military cemeteries is passed to the Zone of the Interior, cemetery facilities located in such rearward areas shall pass to the control of the Graves Registration Service Area Command of the theater.

2. These Area Commands, embracing major geo-political area, shall, during the period stated in preceding paragraph, be under the administration and operational control of the Quartermaster of the command, who will be responsible for the accomplishment of such Graves Registration Service activities as are required in his theater. Such activities will be accomplished in accordance with the provisions of Section II, War Department Circular No. 2, dated 1 January 1945, and such policies as are announced by the Quartermaster General.

3. When, due to the discontinuance of a theater or a readjustment of geographical boundaries of a theater, the control of military cemeteries is passed from the responsibility of the theater commander to the Zone of the Interior, the Quartermaster General shall assume complete control of all Graves Registration Service activities in such areas.

4. When a Graves Registration Service Area Command has been established in a theater the Graves Registration Service Area Commander will be responsible for the administration and technical control of all matters within his area, pertaining to:

- a. Security, care and maintenance of United States Temporary cemeteries.
- b. ~~Exhumation~~ and repatriation of United States deceased.
- c. Transfer of custody of Allied and Enemy dead, buried by United States personnel, to the appropriate nation.
- d. Rehabilitation of abandoned cemeterial lands and their return to their rightful owners.
- e. Reception and orientation of visiting relatives and friends of United States deceased and representatives of various Governments and others acting in an official capacity in connection with Graves Registration matters.
- f. Such other functions as may be especially delegated to him by the appointing authority.

II. Organization

1. The total organization of the area command and the personnel build-up, based on operational requirements by phase, is shown on organization chart (Tab B) and the inclosures thereto. Phased situations are identified as follows:

1st Phase - CEMETERY SECURITY, CARETAKING AND MAINTENANCE.

To be initiated at such time that it becomes impracticable to provide security, care and maintenance of cemeteries in rear areas through the continued use of regularly constituted Graves Registration Companies.

2nd Phase - SUPPLY, FINANCE AND MEDICAL RESPONSIBILITIES.

To be initiated at such time that, through application of a re-deployment program, or for other cogent reason, technical service facilities are no longer available in areas, zones or sectors, and Graves Registration Service Area Units must become self-sufficient in these regards.

3rd Phase - RECEPTION AND INFORMATION.

To be initiated at such time as commercial transport facilities are opened to civilian travel; to receive and furnish information to visiting personnel; and to conduct such visitors on tours of inspection and observation of cemeteries, initial burial plots of War Dead, and of battle areas.

4th Phase - EXHUMATION AND REPATRIATION.

To be initiated at such time as provisions must be made for -

- a. Repatriation of the United States dead.
- b. Transfer of custody to appropriate nation of allied and enemy dead buried in U. S. Military Cemeteries.

2. Phase 1 - Sector headquarters, during this phase, will be organized under a Table of Distribution comparable to the platoon headquarters, Type AB, T/O & E 10-500. During subsequent phases this headquarters will be organized under a Table of Distribution comparable to 1 company headquarters, Type AC, T/O & E 10-500 (see Inclosure 1, Tab B). Operating units required for the security, care and maintenance of military cemeteries during all phases will be provided by units comparable to those outlined on Inclosure 2, Tab B.

3. Phase 2 - Zone headquarters during this phase will be organized under a Table of Distribution comparable to 1 company headquarters, Type AC, T/O & E 10-500. During subsequent phases this headquarters will be organized under a Table of Distribution comparable to the battalion headquarters, Type AD, T/O & E 10-500 with attached medical personnel and will provide for the admin-

istration, supervision, and technical control of such sector headquarters as have been established and to discharge Graves Registration functions of a current nature within its zone. Boundaries of sectors will be such that they will include the maximum number of cemeteries but not so large in area that the officer in charge will be unable to visit all cemeteries within 72 hours, nor that any part of a sector shall be at a distance normally requiring in excess of 24 hours motor travel from its headquarters location.

4. Phase 3 - In addition to the organization required during phase 1 and 2, this phase will require the organization of one or more reception teams comparable to the one shown in column 8, Inclosure 2, Tab B, in order that personnel will be provided to accomplish the duties as outlined in Section II, paragraph 1, Phase 3.

5. Phase 4 - During this phase an area headquarters comparable to the organization indicated on Inclosure 3, Tab B (Headquarters, Quartermaster Graves Registration Service, (Area)) will be established at an appropriate time prior to the eventuation of the conditions and circumstances outlined in Phase 2. Prior to that time, administrative and technical control of the Graves Registration zone and sector headquarters and security, care and maintenance duties will be exercised by the delegation of the authority of the theater commander in such matters to properly appointed zone, sector and theater commanders through the office of the theater Chief Quartermaster.

III. Personnel

1. Initial activation of cemeterial security and caretaking units and their supervisory sector headquarters will be accomplished by utilization of personnel now deployed in the theater. In order to provide a trained cadre for these units, 25% of the personnel required during Phases 1 and 2 will be furnished by transfer to the security and caretaking units or sector headquarters of qualified personnel from presently activated units now performing similar duties. The remaining 75% of the required personnel should be recruited from limited assignment personnel available to the theater commander. Recruitment for Graves Registration Area Command Units should be developed on a voluntary basis and, preferably, from combat or service personnel who were engaged in or in support of combat action in the area served by the cemetery to which they are to be assigned.

2. Personnel required during Phases 3 and 4 will be provided in accordance with policy and procedure to be announced at a future appropriate time.

IV. Initiation of the Program

1. When the conditions and circumstances outlined in Phase 1 become imminent, Sector Headquarters and its subordinate security, caretaking and

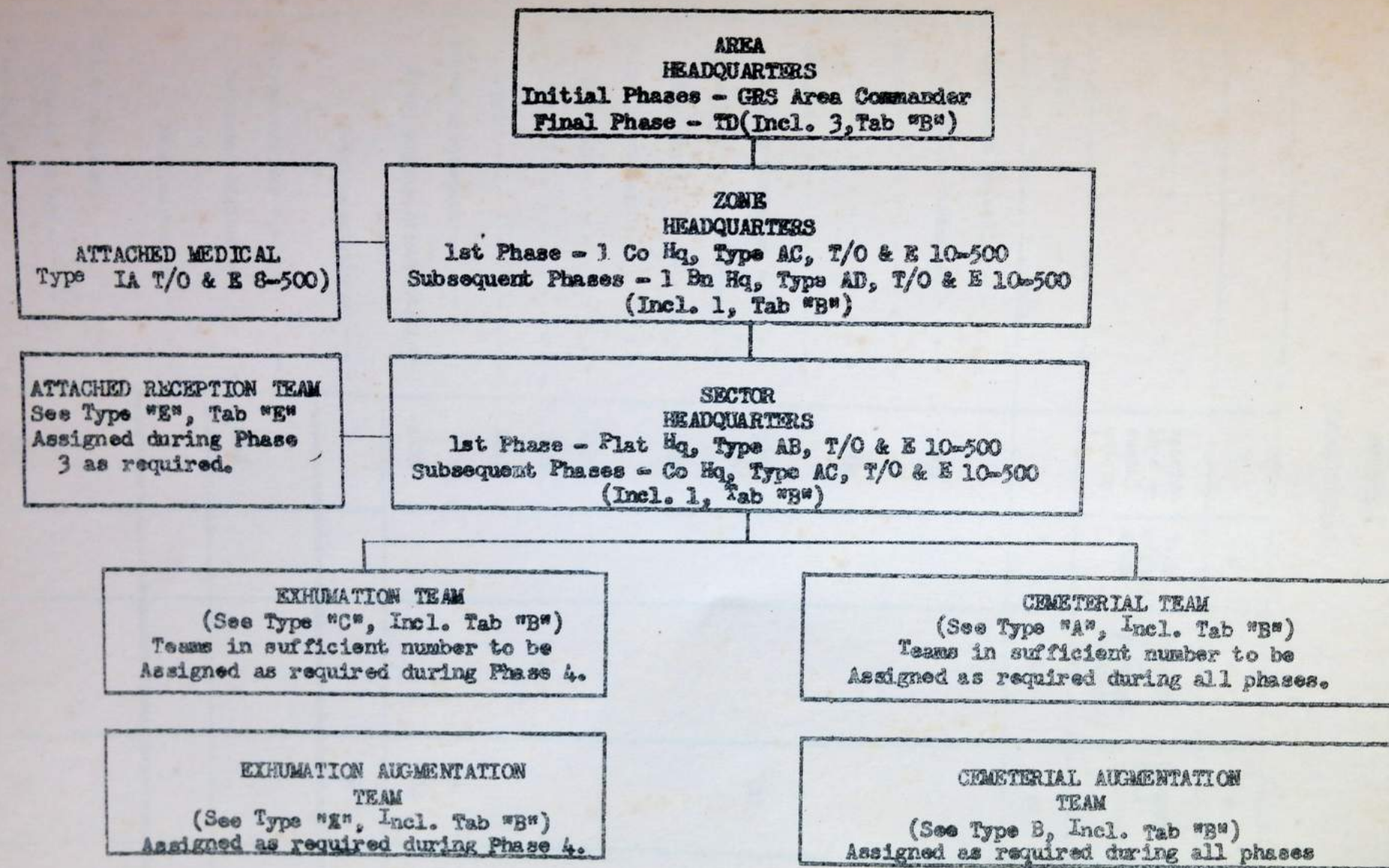
maintenance detachments will be activated.

2. In order to carry out custodial responsibilities in the manner essential to the efficient discharge of the nation's moral obligation to the deceased soldier and his next-of-kin, it is required that each cemetery shall be manned with United States military personnel.

3. During the cemeterial caretaking and maintenance phases and until such time as cemeteries are closed, cemeterial personnel will be provided in accordance with columns 4 and 5 of Inclosure 2, Tab B, and the remarks pertaining thereto.

4. During all phases, organization and implementation will be progressively consistent with requirements and substantially in accordance with the organizational chart furnished as Tab B.

GRAVES REGISTRATION AREA COMMAND -- ORGANIZATION CHART



3 Inclosures.

- 1 - Extract, T/O & E 10-500(Administrative Units)
- 2 - T/D Cemeterial, Exhumation and Reception Units.
- 3 - T/D Area Headquarters, QM Graves Registration Service.

TAB "B"

Incl. 1, Tab "B"

QUARTERMASTER SERVICE ORGANIZATION

Part I - Administration

SECTION 1

ORGANIZATION

1		2	3	5	6	7
1	UNIT	Specification serial number	Technician grade	Platoon Head- quarters (Separate)	Company Head- quarters	Battalion Head- quarters
	TYPE			AB	AC	AD
2	Lieutenant colonel - - - - -					1
3	Battalion commander - - - - -	2902				(1)
4	Major - - - - -					1
5	Executive - - - - -	2902				(1)
6	Captain - - - - -				1	
7	Company commander - - - - -	2902			(1)	
8	Captain or first lieutenant - -					1
9	Chaplain - - - - -	5310				(a1)
10	First lieutenant - - - - -			1		2
11	Adjutant - - - - -	2110				(1)
12	Platoon - - - - -	2902		(1)		
13	Supply - - - - -	4411				(1)
14	Second lieutenant - - - - -				1	
15	Mass, supply, transportation-	4113			(1)	
16	Total commissioned - - -			1	2	3
17	Warrant officer - - - - -					1
18	Personnel officer - - - - -	2200				(1)
19	Total warranted - - - - -					1
20	Master sergeant - - - - -					1
21	Sergeant major - - - - -	502				(1)
22	First sergeant - - - - -	502			1	
	Incl. 1, Tab "B"					

	1	2	3	5	6	7
23	Technical sergeant - - - - -					3
24	Motor - - - - -	014				(b1)
25	Personnel - - - - -	502				(1)
26	Supply - - - - -	821			(1)	(1)
27	Staff sergeant - - - - -			1	2	
29	Motor - - - - -	014			(b1)	
30	Platoon - - - - -	566		(1)		
31	Supply - - - - -	821			(1)	
32	Sergeant - - - - -			1		
33	Motor - - - - -	014		(b1)		
34	Corporal - - - - -				1	
35	Company clerk - - - - -	405			(1)	
37	Technician, grade 5)		(2	4
38	Private, first class) including ② -		(1	2	3
39	Private)		(1	1	2
40	Armorer-artificer - - - - -	511	3		(1)	
41	Bugler and messenger - - - - -	803			(1)	
42	Clerk, general - - - - -	055	4			(1)
43	Clerk, general - - - - -	055	5			(1)
44	Clerk, general - - - - -	055				(1)
45	Clerk, supply - - - - -	835			(1)	(1)
46	Clerk, typist - - - - -	405		(1)		(2)
47	Clerk, chaplain's assistant - -	405				(as 1)
51	Mail clerk - - - - -	055	5			(a 1)
54	Stenographer - - - - -	213	5			(1)
55	Truck driver, light - - - - -	345	5		(1)	(1)
56	Truck driver, light - - - - -	345		(1)	(1)	(1)
57	Total enlisted - - - - -			4	9	d 14
58	Aggregate - - - - -			5	11	e 20

	1	2	3	5	6	7
59	O-Carbine, cal. .30, M-1 - - - - -			5	11	17
60	O-Gun, machine, cal. .50, HB, flexible - - - - -			1	1	
61	O-Pistol, automatic, cal. .45 - - -					2
62	O-Trailer, 1/4-ton, 2-wheel, cargo - - - - -			1	1	(al(3))
63	O-Trailer, 1-ton, 2-wheel, cargo - - - - -				1	
64	O-Truck, 1/4-ton, 4 x 4 - - - - -				1	(al(3))
65	O-Truck, 3/4-ton, weapons carrier -			1		
66	O-Truck, 2 1/2-ton, cargo - - - - -				1	

R E M A R K S

Unit

Type AB - Provides personnel for the administration and supervision of training, supply and operation of a composite platoon only when the platoon is operating as a separate unit.

Type AC - Provides personnel for the administration and supervision of training, supply and operation of a composite company of from 4 to 8 platoons. *

Type AD - Provides personnel for the administration, coordination and supervision of training, supply and operation of from 6 to 8 composite companies.

* This cell may be used as a headquarters for supervision of an organized native labor unit. The personnel of the headquarters should speak the language of the native laborers.

a. Authorized only when aggregate strength of administered units is 900 or more.

b. Grade of motor sergeant will depend on the number of vehicles under his supervision. Basis for grade assignment - Tech. sergeant - 50 to 100 vehicles; St. Sgt. - 20 to 50 vehicles; Sgt - 10 to 20 vehicles; Corporal - 5 to 10 vehicles.

c. Drives truck.

d. When chaplain's assistant and mail clerk are not provided this total will be reduced to 12.

e. When chaplain, chaplain's assistant, and mail clerk are not provided this aggregate will be reduced to 18.

GRAVES REGISTRATION SERVICE ORGANIZATION, ZI

Designation: 7 Cemeterial Unit // Sector /// Area

7 Exhumation Unit // sector /// Area

7 Reception Unit // Sector /// Area

	1	2	3	4	5	6	7	8
1	UNIT	Specification Serial Number	Technician Grade	Cemeterial Team	Cemeterial Augmentation Team	Exhumation Team	Exhumation Augmentation Team	Reception Team
	Type			A	B	C	D	E
2	Captain - - - - -					1		
3	Graves Registration - - -	2430				(1)		
4	First Lieutenant - - - - -					1	1	1
5	Embalmer - - - - -					(1)	(1)	
6	Reception - - - - -	2323						(1)
7	Second Lieutenant- - - - -							2
8	Reception - - - - -	2323						(2)
9	Total commissioned- -					2	1	3
10	Sergeant - - - - -					1		
11	Team Leader - - - - -	356				(1)		
12	Corporal - - - - -					1	1	
13	Team Leader, asst.- - -	356				(1)	(1)	
14	Technician, grade 3)		(1					
15	Technician, grade 4)		(1			1		1
16	Technician, grade 5) including =		(1		1	5	4	3
17	Private, first class)		(1			8	5	2
18	Private		(1			5	5	1
19	Clerk, Graves Registration-	065	5			(b2)	(b1)	
20	Clerk, Information- - -	065	4					(1)
21	Clerk, Information- - -	065	5					(1)
22	Clerk, Typist - - - - -	405	5					(1)
23	Embalmer's assistant- - -		4			(1)	(1)	
24	Foreman, labor - - - - -	356	4	(a1)				
25	Foreman, labor, asst. - -	356	5		(1)			
26	Laborer - - - - -	522				(o10)	(o10)	
	Incl. 2, Tab "B"		1					

	1	2	3	4	5	6	7	8
	Type			A	B	C	D	E
27	Medical - - - - -	250	5			(b2)	(b2)	
28	Messenger - - - - -	590						(2)
29	Superintendent, cemetery-	356	3	(a1)				
30	Truck driver- - - - -	345	5			(1)	(1)	(1)
31	Truck driver- - - - -	345				(1)		(1)
32	Total enlisted- - - -			2	1	19	15	7
33	Aggregate - - - - -			2	1	21	16	10
34	O-Trailer, $\frac{1}{2}$ -ton, cargo- - -					1		
35	O-Trailer, 1-ton, cargo- - -			1		1	1	
36	O-Truck, $\frac{1}{4}$ -ton, - - - - -					1		d2
37	O-Truck, $2\frac{1}{2}$ -ton, w/winch - - -			1		1	1	

R E M A R K S

- 7 Insert number of unit.
 77 Insert number of sector.
 777 Insert geographical designation.

Function: To furnish field operating personnel for Graves Registration Service Area Command.

Type A - Cemeterial Team -

Provides personnel and equipment for security, care and maintenance of United States overseas cemeteries. Labor, as required for maintenance, will be furnished by service troops or civilian personnel. This team is capable of handling a cemetery whose capacity does not exceed 1440 graves.

Type B - Cemeterial Augmentation Team -

Provides personnel and equipment to augment Type "A" Teams when cemeteries have a capacity in excess of 1440 graves. Basis of augmentation will be 1 - Type B for each additional 720 graves.

Type C - Exhumation Team -

Provides personnel and equipment to perform the duties incident to the exhumation, identification, embalming and initial transport of United States and Allied dead prior to repatriation. This team is capable of performing the above function³ for approximately 12 bodies per day.

Type D - Exhumation Augmentation Team -

Provides personnel and equipment to augment Type "C" when time or other factors require that daily exhumation activities exceed the capacity of Type "C" Team. Capacity - approximately 12 bodies per day when operating in cooperation with Type "C" Exhumation Team.

Type E - Reception Team -

Provides Receptionists and Transportation to receive, transport, and furnish information to visiting next-of-kin, and official representatives on Graves Registration Service matters. To be assigned as required to Area, Zone or Sector Graves Registration Headquarters.

Note: When public or military policy indicates that civilian employees should be used as operating personnel in any position, conversion from Military Occupational Serials to civilian occupational codes will be made in accordance with job definitions and code numbers as outlined in the United States Civil Service Commission's "Temporary Type of Position Index for use in Coding to Services".

- a. Drives truck.
- b. Forms identification teams, each consisting of
1 - Clerk and 1 - Medical technician.
- c. For opening graves.
- d. Car 5-passenger, sedan may be substituted when approved by the Quartermaster General and authorized by the War Department.

Designation:

Headquarters # _____

Area: Quartermaster Graves Registration Service

	1	2	3	4	5	6	7	8	9	10	11	12	13	14	15	16	17	18	19	20	21	22	23	24	25	26	27		
1	UNIT	Specification Serial Numbers	Technician Grades	Staff Headquarters	ADMINISTRATIVE DIVISION							INTELLIGENCE DIVISION				PLANS AND OPERATIONS DIVISION				SUPPLY DIVISION					Aggregate	REMARKS			
					Office of the Director	Mail & Records Control Br.		Personnel Branch		Fiscal Branch	Total Division	Office of the Director	Technical Information Branch	Liaison Branch	Total Division	Office of the Director	Planning Branch	Operations Branch	Total Division	Office of the Director	Administrative Branch	Procurement Branch	Storage and Issue Branch	Transportation Branch			Total Divisions		
						Mail and Records Section	GDS Records Section	Military Personnel Section	Civilian Personnel Section																				
2	Brigadier General - - - - -			1																							1		
3	Zone commander- - - - -	0002		(1)																							(1)		
4	Colonel - - - - -			7																							(1)		
5	Deputy commander- - - - -	2010		(1)																							(1)		
6	S-1, Personnel- - - - -	2260		(1)																							(1)		
7	S-2, Intelligence - - - - -	9301		(1)																							(1)		
8	S-3, Plans and Operations - - - - -	2162		(1)																							(1)		
9	S-4, Supply - - - - -	4010		(1)																							(1)		
10	Chaplain - - - - -	5310		(1)																							(1)		
11	Medical - - - - -	3000		(1)																							(1)		
12	Lieutenant Colonel- - - - -				1						1	1			1	1				1	1					1	4	(1)	
13	Administrative- - - - -	2025			(1)						(1)				(1)												(1)	(1)	
14	Intelligence- - - - -	2025										(1)								(1)							(1)	(1)	
15	Plans and Operations- - - - -	2025															(1)			(1)						(1)	(1)	(1)	
16	Supply - - - - -	2025																		(1)						(1)	10	(1)	
17	Major - - - - -				2					1	3	1			1		1	1	2			1	1	1	1	4	1	(1)	
18	Fiscal- - - - -	6301								(1)	(1)																(1)	(1)	
19	Intelligence- - - - -	9303										(1)			(1)												(1)	(1)	
20	Operations - - - - -	2130																	(1)	(1)							(1)	(1)	
21	Personnel - - - - -	2220			(1)						(1)																(1)	(1)	
22	Plans and policies- - - - -	2616																(1)		(1)							(1)	(1)	
23	Procurement Planning- - - - -	4319																					(1)				(1)	(1)	
24	Records control - - - - -	2107			(1)						(1)														(1)		(1)	(1)	
25	Supply - - - - -	4416																						(1)			(1)	(1)	
26	Supply administrative - - - - -	4411																			(1)					(1)	(1)	(1)	
27	Transportation - - - - -	0612																							(1)	(1)	(1)	(1)	

Incl. 3. Tab. 222

	1	2	3	4	5	6	7	8	9	10	11	12	13	14	15	16	17	18	19	20	21	22	23	24	25	26	27
28	Captain - - - - -						1	1	1	1	4		2	1	3		1	2	3			1	1	1	3	13	
29	Foreign liaison - - - - -	9303												(1)	(1)											(1)	
30	Medical - - - - -	3301																(1)	(1)							(1)	
31	Operations - - - - -	2162																(1)	(1)							(1)	
32	Paymaster - - - - -	6310								(1)	(1)															(1)	
33	Personnel - - - - -	2200						a(1)			(1)															(1)	
34	Personnel - - - - -	2202							(1)		(1)															(1)	
35	Plans and policies - - - - -	2616															(1)		(1)							(1)	
36	Public Relations - - - - -	5401											(1)													(1)	
37	Purchasing and contracting - - - - -	4310																				(1)			(1)	(1)	
38	Reception - - - - -	2323											(1)		(1)											(1)	
39	Records - - - - -	2430					(1)				(1)															(1)	
40	Supply - - - - -	4411																					b(1)		(1)	(1)	
41	Transportation - - - - -	0642																						(1)	(1)	(1)	
42	First Lieutenant)																										
43	Second Lieutenant) - including			1					1		1		2	1	3				2	2		1		1	2	5	
44	Aide de camp - - - - -	2030		(1)																						(1)	
45	Field Liaison - - - - -	2430																	(1)	(1)						(1)	
46	Inspector, supply - - - - -	4314																				(1)			(1)	(1)	
47	Investigation - - - - -	9320												(1)	(1)										(1)	(1)	
48	Personnel Procurement - - - - -	2331							(1)		(1)															(1)	
49	Reception - - - - -	2323											(2)		(2)											(2)	
50	Topographic Engineer - - - - -	7915																(1)	(1)							(1)	
51	Transportation - - - - -	0642																						(1)	(1)	(1)	
52	Total commissioned - - - - -			9	3		1	1	2	2	9	2	4	2	8	1	2	5	8	1	1	3	2	3	10	44	
53	Warrant Officer, Senior Grade - - - - -			1						1	1											1			1	3	
54	Auditor - - - - -	6110								(1)	(1)															(1)	
55	Chief clerk - - - - -	2600		(1)																						(1)	
56	Supply Administrative - - - - -	4411																							(1)	(1)	
57	Warrant Officer, Junior Grade - - - - -					1	1	1	1		4											(1)				4	
58	Personnel - - - - -	2200						(1)			(1)															(1)	
59	Personnel - - - - -	2202							(1)		(1)															(1)	
60	Records - - - - -	2407				(1)	(1)				(2)															(2)	
61	Total Warrants - - - - -			1		1	1	1	1	1	5														1	7	
62	Master Sergeant - - - - -			2																						2	
63	Graves registration - - - - -	502		a(1)																						(1)	
64	Medical - - - - -	673		(1)																						(1)	

	1	2	3	4	5	6	7	8	9	10	11	12	13	14	15	16	17	18	19	20	21	22	23	24	25	26	27
65	Technical Sergeant - - - - -					2	2	1	1		6						1	1	2			1	2	1	4	12	
66	Chief Clerk - - - - -	502															(1)		(1)							(1)	
67	Chief Clerk - - - - -	371																				(1)			(1)	(1)	
68	Chief Clerk - - - - -	374																					(1)		(1)	(1)	
69	Chief Warehouseman - - - - -	252																				(1)		(1)	(1)	(1)	
70	Graves Registration - - - - -	502					(1)				(1)															(1)	
71	Medical - - - - -	673					(1)				(1)															(1)	
72	Message Center - - - - -	667				(1)					(1)															(1)	
73	Operations - - - - -	076																(1)	(1)							(1)	
74	Personnel - - - - -	502						(1)	(1)		(2)															(2)	
75	Records - - - - -	055				(1)					(1)															(1)	
76	Transportation - - - - -	502																						(1)	(1)	(1)	
77	Staff Sergeant - - - - -					2	4				6							2	2				3		3	11	
78	Graves Registration - - - - -	055					4(3)				(3)															(3)	
79	Medical - - - - -	673					(1)				(1)							(1)	(1)							(2)	
80	Message Center - - - - -	667				(1)					(1)															(1)	
81	Records - - - - -	055				(1)					(1)															(1)	
82	Requisition - - - - -	815																					(1)		(1)	(1)	
83	Stock Record - - - - -	815																							(1)	(1)	
84	Topographic Draftman - - - - -	076																(1)	(1)							(1)	
85	Warehouseman - - - - -	252																					(1)		(1)	(1)	
86	Technician, Grade 3)																									(4	
87	Technician, Grade 4)																									27	
88	Technician, Grade 5 - including - -			9	1	9	16	9	12	4	50	1	5	5	11	1	5	7	13	1	4	6	18	4	33	12	
89	Private, First Class)																									21	
90	Private)																									22	
91	Bookkeeper - - - - -	055	3																				(1)		(1)	(1)	
92	Checker - - - - -	835	5																					(1)	(1)	(1)	
93	Checker - - - - -	835																						(1)	(1)	(1)	
94	Clerk, Accounts - - - - -	055	4							(1)	(1)													(1)	(1)	(1)	
95	Clerk, General - - - - -	055	4															(1)	(1)	(2)		(1)		(1)	(1)	(2)	
96	Clerk, General - - - - -	055	5	(1)						(1)	(1)											(1)		(1)	(1)	(3)	(5)
97	Clerk, Graves Registration - - - - -	055	4				4(3)				(3)											(1)	(1)	(1)	(3)	(5)	
98	Clerk, Graves Registration - - - - -	055	5				4(4)				(4)															(4)	
99	Clerk, Graves Registration - - - - -	055					6(6)				(6)															(6)	
100	Clerk, Information - - - - -	055	5										(1)		(1)											(1)	
101	Clerk, Information - - - - -	055											(1)		(1)											(1)	
102	Clerk, Medical - - - - -	409	4	(1)																						(1)	
103	Clerk, Message Center - - - - -	667	4			(1)					(1)															(1)	
104	Clerk, Message Center - - - - -	667	5			(1)					(1)															(1)	
105	Clerk, Payroll - - - - -	405	4					5(1)	(1)		(2)															(1)	

	1	2	3	4	5	6	7	8	9	10	11	12	13	14	15	16	17	18	19	20	21	22	23	24	25	26	27
106	Clerk, Payroll - - - - -	405	5					(1)	(2)		(3)																(3)
107	Clerk, Payroll - - - - -	405						(1)	(2)		(3)																(3)
108	Clerk, Record- - - - -	055	4			(1)		(1)	(1)		(3)			(1)	(1)												(4)
109	Clerk, Record- - - - -	055	5			(1)		(1)	(1)		(3)			(1)	(1)		(1)	(1)	(2)								(6)
110	Clerk, Record- - - - -	055				(1)		(1)	(1)		(3)							(1)	(1)								(4)
111	Clerk, Requisition - - - - -	835	4																				(1)		(1)	(1)	
112	Clerk, Requisition - - - - -	835	5																				(1)		(1)	(1)	
113	Clerk, Requisition - - - - -	835																					(1)		(1)	(1)	
114	Clerk, Statistical - - - - -	055	3							(1)													(1)		(1)	(2)	
115	Clerk, Stock Record- - - - -	835	4																				(1)		(1)	(1)	
116	Clerk, Stock Record- - - - -	835	5																				(1)		(1)	(1)	
117	Clerk, Stock Record- - - - -	835																					(1)		(1)	(1)	
118	Clerk, Typist - - - - -	405	5	(1)		(1)	(1)	(1)	(1)	(1)	(5)			(1)	(1)		(1)	(1)	(2)		(1)	(1)	(1)	(1)	(4)	(13)	
119	Clerk, Typist- - - - -	405				(1)	(2)	(1)	(2)		(6)						(1)	(1)	(2)			(1)	(1)		(2)	(10)	
120	Chauffeur - - - - -	345	4	(1)																							(1)
121	Messenger - - - - -	522				(2)		(1)	(1)		(4)		(1)		(1)		(1)		(1)		(1)				(1)	(7)	
122	Orderly - - - - -	990		(1)																							(1)
123	Stenographer - - - - -	213	3	(1)																							(1)
124	Stenographer - - - - -	213	4	(1)	(1)					(1)	(1)	(1)		(1)	(2)	(1)			(1)	(1)	(1)			(1)	(2)	(6)	
125	Truck driver, light- - - - -	345	5	(1)									(1)		(1)			(1)	(1)		(1)		(1)		(2)	(5)	
126	Truck driver, light- - - - -	345		(1),									(1)	(1)	(2)			(1)	(1)				(1)		(1)	(5)	
127	Warehouseman - - - - -	188																					(4)		(4)	(4)	
128	Total enlisted- - - - -			11	1	13	22	10	13	4	63	1	5	5	11	1	6	10	17	1	4	7	23	5	40	112	
129	Aggregate - - - - -			21	4	14	24	12	16	7	77	3	9	7	19	2	8	15	25	2	6	10	25	8	51	193	
130	0-Car, 5-passenger sedan- - - - -			1																							1
131	0-Trailer, 1/4-ton, cargo - - - - -			2									2	1	3			2	2				1		1	8	
132	0-Trailer, 1-ton cargo - - - - -																						1		1	1	
133	0-Truck, 1/4-ton, cargo - - - - -			2									2	1	3			2	2		1		1		2	9	
134	0-Truck, 2 1/2-ton, cargo - - - - -																						1		1	1	

FUNCTION:

Provides an administrative headquarters for the control of a number of Quartermaster Graves Registration Service Zone Headquarters when operating outside the continental U. S.

The number of subordinate headquarters to be determined by the geographical location area, characteristics of terrain, and the number of American cemeteries in the area.

Staff Headquarters:

Provides the zone commander with a group of qualified advisors who, in addition to this primary duty, formulates policies on:

- a. International relations concerning Graves Registration Service activities.
- b. Securing and controlling civilians required for Graves Registration Service activities.
- c. Operation of the Graves Registration units within the area.
- d. Inspects Graves Registration activities in the field and furnishes the zone commander with detailed inspection reports.

Administrative Division:

Mail and Records Section

Provides a message center and a centralized file for all correspondence and records except identification and burial location records, pertaining to area activities.

Graves Registration Records Section:

Maintains GRS identification and isolated grave and cemetery location records. Obtains data on individuals who have been reported as missing in action and compares it with data received from the field on unidentified dead in order to acquire sufficient information for the completion of all identification records which may be the responsibility of the area. This responsibility includes such records of American, Allied and Enemy dead as may come under zone control.

Incl.3, Tab "B"

Military Personnel Section:

Maintains all Military Personnel files. Initiates or continues action on correspondence concerning such personnel. Prepares morning reports and such rosters as are required. Prepares payroll and forwards them to the Fiscal Section of the Supply Division.

Civilian Personnel Section:

Maintains all Civilian Personnel files. Procures civilian personnel, as available, and allots quotas to the Sectors in accordance with information furnished by the Planning Section, Plans and Operations Division. Prepares payroll and forwards them to the Fiscal Section, Supply Division. Initiates or continues action on all correspondence concerning civilian personnel. Performs any other such administrative duties as are related to civilian personnel under the jurisdiction of area.

Intelligence Division:

Field Information Branch:

Maintains informational liaison with all Zone Headquarters, Graves Registration Records Section, and Plans and Operations Division.

Provides for the reception of authorized representatives from the various nations (allied or enemy). Civic or political organizations and relatives who are interested in GRS activities, and with the aid of receptionists from the Sector Headquarters, conducts such tours of inspection as are required.

Liaison and Policies Branch:

Maintains liaison with US State Department, or if so authorized, with State Department of the nation involved, concerning policies on transportation, return of real estate, wage scales, working hours and procurement of such supplies as may be procured locally.

Investigates and collects facts pertaining incidents peculiar to or

affecting Graves Registration Service activities or violations of personal or official conduct, labor or procurement contracts; analyzes the information obtained; furnishes reports, with corrective recommendations, to the Area Commander.

Maintains records of all the section's activities.

Plans and Operations Division:

Planning Branch:

Formulates basic plans and policies for operation in the area.

Initiates planning for personnel, facilities and equipment required for such operation.

Evaluates reports of activities, methods of operation and results of operation from other areas and prepares recommendations for changes in policy or operation which would tend to increase operation efficiency.

Maintains close liaison with other divisions of this headquarters.

Operations Branch:

Directs and supervises the location and disinterment of dead from battle field graves, reinterment in central cemeteries, disinterment and return of the dead to its homeland.

Allocates civilians to Sectors.

Furnishes the other Divisions concerned with information as to personnel, equipment, supply and transportation requirements.

Maintains progress reports in such activities as the Branch is responsible for.

Supply Division:

Control Section:

Administers to and controls the operations of the Supply Division.

Initiates or continues action on correspondence pertaining to the activities of the Division.

Fiscal Section:

Allots appropriated funds to the various divisions and sub-head-quarters according to estimated requirements.

Computes additional requirements for funds and makes appropriate recommendations to the Area Commander.

Maintains files of obligating instruments and determines funds to be charged against allotments.

Audits records of the various area installations.

Pays military and civilian personnel.

Prepares monthly and annual reports of obligations and expenditures.

Has custody of non-appropriated funds.

Procurement Section:

Determines requirements for all supplies related to area operations and the availability of such supplies for local procurement.

Maintains Liaison with local and US Government.

Contracts for and purchases such local supplies as are available and required.

Inspects delivered supplies to verify conformity to contract as to quality and quantity.

Supply Section:

Screens and consolidates requisitions received from Sectors or such other organizations as are assigned to the area.

Furnishes shipping agency with shipping instructions and schedules for direct shipment to using headquarters.

Checks receiving report against requisitions.

Follows up belated shipments and expedites them.

Maintains complete area supply records.

Transportation Section:

Maintains liaison with local transportation installations and coordinates shipping requirements, routes and schedules for motor, rail, air and water transportation.

Maintains close liaison with Plans and Operations Division, keeping that division informed on shipping schedules in order that disinterment operations may be properly scheduled.

Plans all shipments with a view to conserving passenger and/or cargo space.

Controls such motor transport units as may be attached or assigned to the area.

NOTE: When required, supply, mess or transportation units, organized under T/O and E 10-500 may be assigned or attached to this headquarters.

When qualified civilian personnel is available, they may be provided in lieu of enlisted personnel.

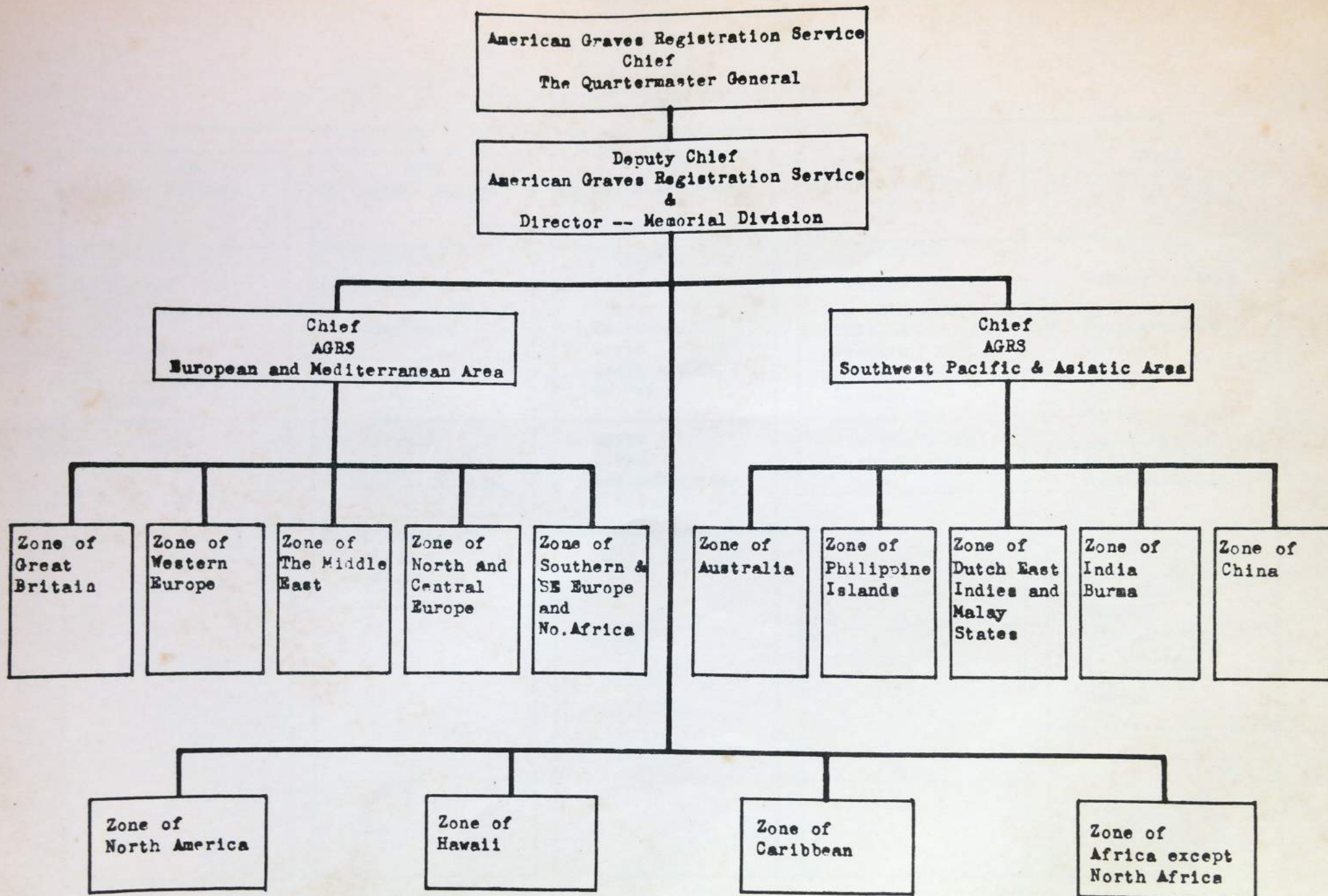


EXHIBIT "D"

Chief
AGRS
European and Mediterranean Area

ZONE of Great Britain	ZONE of Western Europe	ZONE of The Middle East	ZONE of North & Central Europe	ZONE of South & SE Europe and North Africa
SECTORS	SECTORS	SECTORS	SECTORS	SECTORS
1. England Scotland Wales Ireland	1. Northeastern France Luxembourg	1. Iran Iraq Palestine Syria Saudi Arabia Turkey	1. Belgium	1. Northern Italy
2. Norway Sweden Iceland Archangel	2. Normandy and Brittany Peninsulas, France	2. Egypt Libya Anglo-Egyptian Sudan	2. Holland Denmark	2. Southern Italy Corsica Sicily Sardinia Malta
	3. Central France		3. Germany Poland Czechoslovakia Western Russia	3. French Morocco Spanish Morocco Algeria Tunisia Gibraltar
	4. Southeastern France Switzerland			4. Austria Hungary Rumania Bulgaria Yugoslavia Greece

EXHIBIT "E"

EXHIBIT "D"

Chief
AGRS
Southwest Pacific & Asiatic Area

ZONE of Australia	ZONE of Philippine Islands	ZONE of Dutch East Indies and Malay States	ZONE India Burma	ZONE China
SECTORS	SECTORS	SECTORS	SECTORS	SECTORS
1. Australia	1. Luzon	1. Celebes Islands Timor Java	1. Burma Thailand	1.
2. Solomon Islands New Guinea Admiralty Islands Green Islands New Britain St. Matthias	2. Central Philippine Is.	2. Borneo	2. India	2.
3. New Zealand	3. Southern Philippine Is.	3. Sumatra and Malayan Peninsula		3.

EXHIBIT "F"

Deputy Chief
American Graves Registration Service
&
Director -- Memorial Division

ZONE of North America	ZONE of Hawaii	ZONE of Caribbean	ZONE of Africa except North Africa
SECTORS	SECTORS	SECTORS	SECTORS
1. (Eastern) Newfoundland Greenland Eastern Canada	1. Hawaiian Is. Midway Island	1. Central America Canal Zone Guatemala	1. Senegal Gambia Sierre Leone Liberia Gold Coast Nigeria Belgian Congo U. of So. Africa Eritrea Ascension Is.
2. (Western) Alaska Aleutian Is. Western Canada	2. Marianas Is. Marshall Is. Palau Is. Guam Is. Wake Is.	2. South America Brazil Br. Guiana Colombia Ecuador Galapagos Is. Fr. Guiana Peru Surinam Venezuela	
	3. Society Is. Somoan Is. Canton Is. Christmas Is. Fanning Is. Cook Is. Tonga Is.	3. West Indies Bermuda Br. West Indies Puerto Rico Cuba Netherland West Indies Virgin Islands	
	4. Ellice Is. Gilbert Is. New Caledonia New Hebrides Fiji Is. Truk Is.		

EXHIBIT "G"
AMERICAN AREA